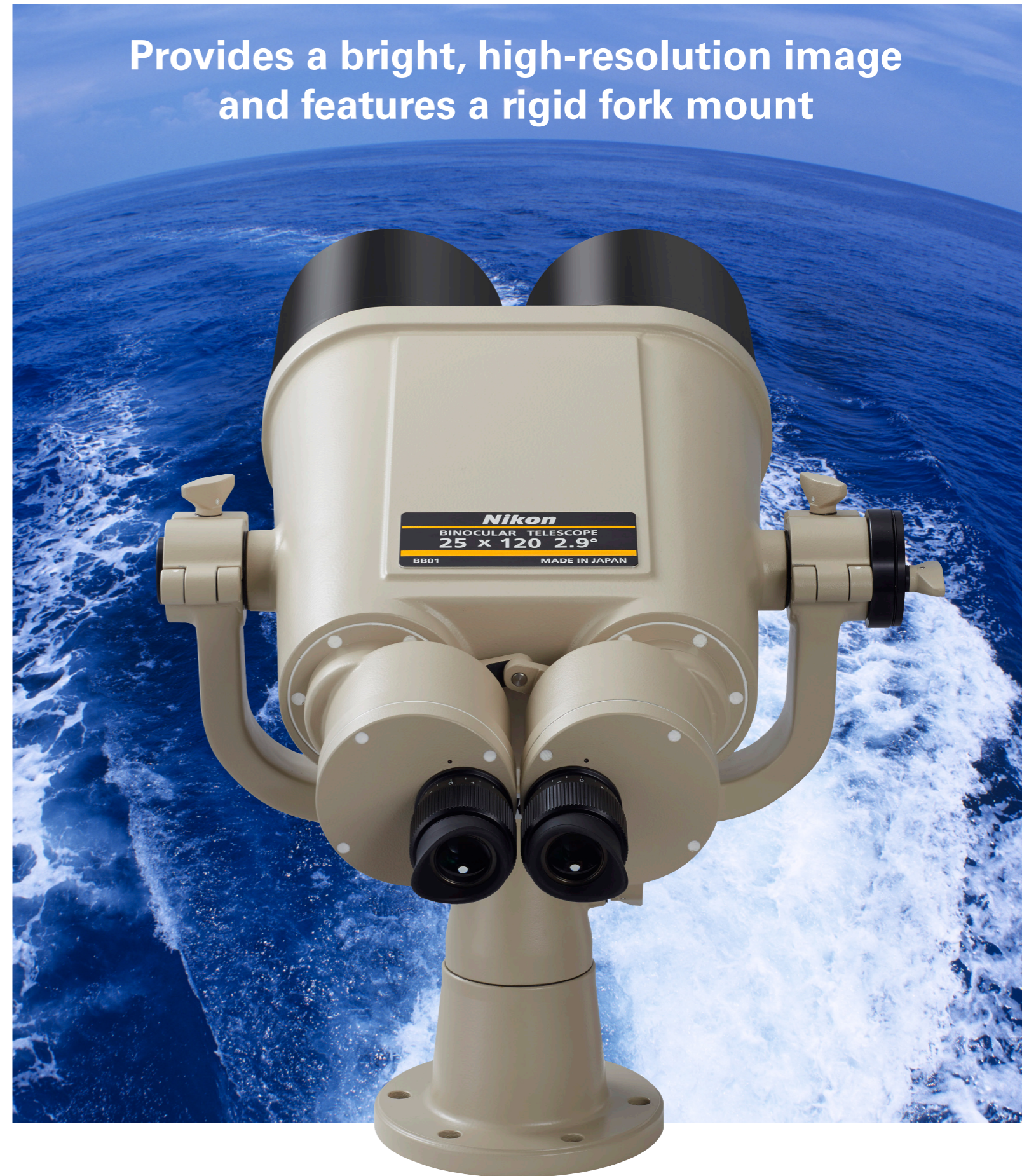


# Binocular Telescopes

20x120 IV/25x120

Provides a bright, high-resolution image and features a rigid fork mount



The product lineup listed in this brochure is correct as of the time of publication, and is subject to change without notice, while availability may vary according to region. Specifications and equipment are subject to change without any notice or obligation on the part of the manufacturer.

November 2019  
©2019 NIKON VISION CO., LTD.

**WARNING** Never look at the sun directly through optical equipment. It may cause damage to or loss of eyesight.



NIKON VISION CO., LTD.  
www.nikon.com/sportoptics

En

3CE-BOQH-1(1911-00)K

# A bright, sharp and wide-ranging field of view, ideal for use in observation, fishing and sailing applications

- Large 120mm objective diameter realises a brighter, high-resolution image
- The Binocular Telescope 20×120 IV with a superior optical system achieves a sharp image with various aberrations effectively compensated
- The Binocular Telescope 25×120 enables high-power and dynamic observation with superior image flatness while realising a wide field of view (64.7° apparent field of view)
- Long eye relief design ensures a clear field of view. Horn-shaped rubber eyecups are employed for easier viewing.
- Airtight waterproof structure prevents rain and night dew entering. Fogproof construction filled with nitrogen gas keeps the binoculars fog-free inside. High corrosion-proofing and shake-resistance features maintain performance over an extended life.
- Equipped with a solid fork mount, easy handling is achieved with 360° horizontal rotation and -30° (downward) to +70° (upward) tilting
- Using a durable pillar stand w/adaptor (optional) enables stabler, easier observation



## Binocular telescope body specifications

	20×120 IV	25×120
Magnification (x)	20	25
Objective diameter (mm)	120	120
Angular field of view (real) (°)	3.0	2.9
Angular field of view (apparent) (°)*1	55.3	64.7
Field of view at 1,000m/yd. (m/ft)	52/156	50/150
Exit pupil (mm)	6.0	4.8
Relative brightness	36.0	23.0
Eye relief (mm)	20.8	18.9
Close focusing distance (m/ft)	133/436.4	210/689.0
Length (mm/in.)	680/26.8	672/26.5
Width (mm/in.)	454/17.9	454/17.9
Height (mm/in.)	160/6.3	160/6.3
Weight (kg/oz.)	14/493.8	14/493.8
Interpupillary distance adjustment (mm/in.)	58–74/2.3–2.9	58–74/2.3–2.9
Diopter Adjustment (m <sup>-1</sup> )	-5–+3	-5–+3
Structure	Waterproof (up to 2m/6.6 ft for 10 minutes)*2 and nitrogen gas filled	

\*1 Apparent field of view is calculated based on the ISO14132-1:2002 standard.

\*2 The binocular telescope is waterproof, and will suffer no damage to the optical system if submerged or dropped in water to a maximum depth of 2m/6.6 ft for up to 10 minutes.

## Set unit

Both binoculars come with fork mount and vinyl cover.

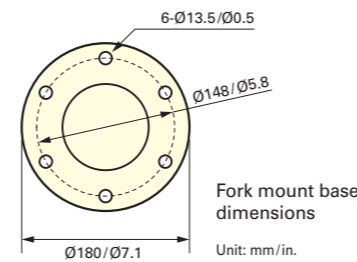
20×120 IV body



25×120 body



Fork mount



Tilting angle (upward) (°)	70
Tilting angle (downward) (°)	30
Horizontal rotation (°)	360
Height (mm/in.)	407/16.0
Width (mm/in.)	406/16.0
Weight (kg/oz.)	5.5/194.0

Vinyl cover



Length (mm/in.)	500/19.7
Width (mm/in.)	720/28.3
Height (mm/in.)	500/19.7
Weight (g/oz.)	550/19.4

## Supplied accessories



Objective lens caps



Eyepiece caps



Horn-shaped eyecups

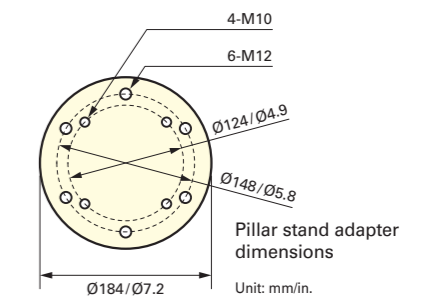
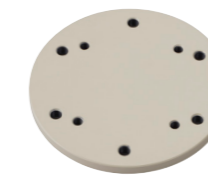
## Binocular telescope pillar stand w/adaptor (optional)

Pillar stand



Height (mm/in.)	1,115/43.9
Base (length from stand centre) (mm/in.)	423/16.7
Weight (kg/oz.)	26.5/934.8
Bolt (supplied) Size	M10x20
Number of bolts	16

Pillar stand adaptor



Diameter (mm/in.)	184/7.2
Thickness (mm/in.)	12/0.5
Weight (g/oz.)	850/30.0
Bolt (supplied) Size	M12x30
Number of bolts	6